



# Bone Regeneration of Macropore Octacalcium Phosphate–Coated Deproteinized Bovine Bone Materials in Sinus Augmentation: A Prospective Pilot Study

Jee-Ho Lee, DDS, PhD,\* Jin-Hong Kim, DDS,† and Ju-Hong Jeon, MD, DDS, PhD‡

**A**lveolar bone shortage for implant surgery has been a chronic problem for a long time. Edentulous ridges in the maxillary posterior area, in particular, have a tendency of rapid atrophy of alveolar bone after extraction of teeth after advanced periodontal disease, trauma, or retained dental caries and require special reconstructive procedures to increase the alveolar bone height through bone graft for prospective implant therapy. When a bone graft in the maxillary sinus is considered in severely compromised cases, the first surgical options become lateral approach to the maxillary sinus. Several bone graft materials can be used in maxillary sinus augmentation, such as autogenous bone, mineralized and demineralized freeze-dried allografts, coralline calcium carbonate, bioactive glass, synthetic polymers, anorganic bovine bone, and synthetic hydroxyapatite

**Objective:** To investigate the osteogenic potential of macropore octacalcium phosphate (OCP)–coated deproteinized bovine bone materials (DBBMs) in sinus augmentation.

**Study design:** Macropore OCP-coated DBBM was manufactured from bovine bone by thermal and chemical processing. Sinus grafts of a lateral window approach with experimental bone were conducted in 10 patients. At 6 months after surgery, a total of 10 specimens were obtained from 10 patients. But, 4 of them were excluded because the amount of specimens was not enough for evaluation. Morphological investigation under scanning electron

microscopy and histological evaluation were performed.

**Results:** OCP was evenly attached to the surface of the experimental graft and showed a relatively large pore size (300–400  $\mu\text{m}$ ) compared with Bio-Oss (100–200  $\mu\text{m}$ ). New bone comprised 23.49% ( $\pm 0.10$ ), and residual graft material comprised 15.39% ( $\pm 0.06$ ) in bone specimens.

**Conclusion:** A macropore-sized design and OCP coating could present a favorable environment for new bone formation in maxillary sinus grafts. (Implant Dent 2015;0:1–6)

**Key Words:** sinus augmentation, octacalcium phosphate, macropore, bovine bone

(HA).<sup>1–8</sup> Autogenous bone, though, is superior to other materials in infection resistance, graft success rate, abundant cellular contents, and ability to induce migration of osteogenic cells.<sup>3,9,10</sup> Nonetheless, autogenous bone requires additional surgical procedures that could cause donor site complications, such as hematoma and damage to adjacent anatomic structures.<sup>11</sup> Moreover, relatively rapid resorptions of autogenous bone grafts have been reported, particularly with severe pneumatization in maxillary sinus.<sup>12,13</sup>

Xenogenous and synthetic bone graft materials have been considered attractive alternatives for overcoming the shortcomings of autogenous bone graft materials. They are potentially available in unlimited amounts and can be controlled in a range of different sizes and shapes as needed and designed to deliver adjunctive molecules, such as various hormones and growth factors, to promote new bone formation.<sup>14,15</sup> The bone graft procedures are commonly followed by the migration of osteogenic mesenchymal cells

\*Clinical Assistant Professor, Department of Oral and Maxillofacial Surgery, Asan Medical Center, Seoul, Korea.  
†Resident, Department of Oral and Maxillofacial Surgery, Seoul Asan Medical Center, Seoul, Korea.  
‡Professor, Department of Oral and Maxillofacial Surgery, Asan Medical Center, Seoul, Korea.

Reprint requests and correspondence to: Ju-Hong Jeon, MD, DDS, PhD, Department of Oral and Maxillofacial Surgery, Asan Medical Center, 88, Olympic-ro, 43-gil, Songpa-gu, Seoul 138-736, Korea, Phone: +82-2-3010-3958, Fax: +82-2-3010-6967, E-mail: amcomsjh@gmail.com

ISSN 1056-6163/15/00000-001  
Implant Dentistry  
Volume 0 • Number 0  
Copyright © 2015 Wolters Kluwer Health, Inc. All rights reserved.

DOI: 10.1097/ID.0000000000000249

and ingrowth of microcapillary cells to the defect site. The extent of these processes varies according to the shape and macro-micro size of the bone graft materials, which is controlled by a thermochemical process and surface treatment.<sup>16,17</sup> Synthetic HA with a controlled macropore size presents the defect site with an abundant space for the ingrowth of microvessels and the migration of osteoblasts, ensuring effective new bone formation.<sup>18–20</sup> The high osteoconductivity of graft bone materials promotes the new bone formation by helping the ingrowth of osteogenic cell and microvessels.<sup>21</sup> The modification of bone graft materials to improve osteoconductivity has also been studied.<sup>22</sup> Surface treatment of bone grafts is also considered to be a key factor in the promotion of new bone formation. In addition, octacalcium phosphate (OCP), an HA-based synthetic graft material, has tendency to undergo a relatively fast resorption and be promptly replaced by new bone compared with other types of synthetic bone graft, such as  $\beta$ -tricalcium phosphate ( $\beta$ -TCP) and HA.<sup>23,24</sup> OCP acts as a precursor for new bone formation after graft placement with excellent biocompatibility, and its physical properties can be improved by modification with additional media, allowing its use in an extensive variety of applications.<sup>25</sup>

Xenogenous grafts have shown excellent osteoconductive properties and promising results in sinus floor elevation procedures. Moreover, they promote osteogenesis and show a very low resorption rate.<sup>26,27</sup> Xenogenous graft material is composed of natural bone mineral from other species and has extensive interconnecting pores and a high surface energy area. It acts as a framework onto which bone-forming cells and blood vessels travel to form new bone.<sup>28,29</sup> One type of xenogenous graft, Bio-Oss (Geistlich Pharma, Wolhusen, Switzerland), involves deproteinized bovine bone material (DBBM), which has already been proven in previous studies to be clinically stable and have superior osteogenic ability and has been commercially used in many implant surgeries.<sup>2,12,13,26,30</sup> However, the slow

rate of resorption and its osteogenicity should be improved upon. Studies into modification of the graft, such as surface treatment and graft design, are still ongoing to overcome the limits of DBBM.<sup>7,31,32</sup>

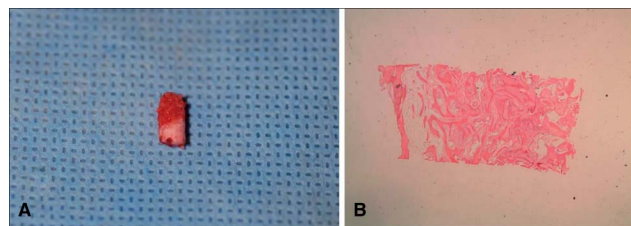
In this study, the graft design of conventional DBBM was modified using thermal and chemical treatment to obtain macro-sized pores. In addition, OCP granules were attached to the surface of the graft material. Patients who had an edentulous ridge in the posterior maxilla with alveolar bone atrophy received a sinus graft through a lateral approach with macropore-sized OCP-coated DBBM in the prospective implant therapy. Graft cores were obtained 6 months after surgery to evaluate the osteogenic potential and

clinical reliability of the modified DBBM.

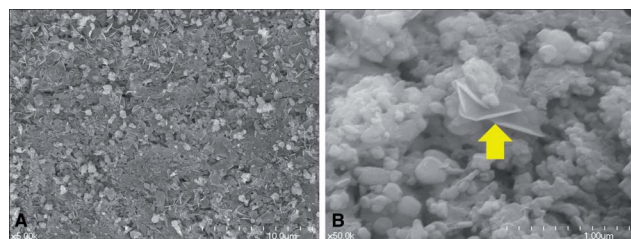
## MATERIALS AND METHODS

### Preparation of OCP-Coated Macropore Bovine Bone

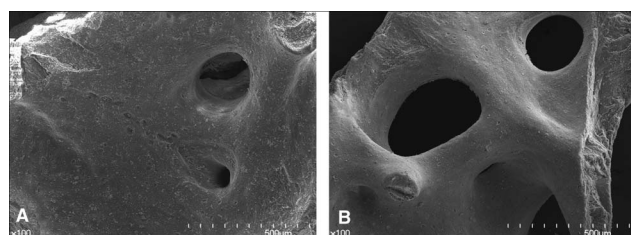
Macropore OCP-coated DBBM (Ti-Oss; Chiyewon, Seoul, Korea) was manufactured from bovine bone. OCP was prepared by the LeGeros method and processed to coat the surface of the experimental bone.<sup>33</sup> To eliminate fat and protein in general, meticulous cleansing and a thermal process were performed. During this process, the calcium core structure of trabecular bone shrinks by approximately 15%, with pore size tending to become larger as a result. This results in a significant biological advantage for bone formation because the blood is readily absorbed



**Fig. 1.** A harvested bone core (A) and histological preparation of the specimen for assessment (B).



**Fig. 2.** OCP attached to the surface of the bovine bone. A, Scale-shaped OCPs were shown on the surface of the bone graft material ( $\times 5000$ , SEM). B, OCP was embedded among the round-shaped bone particles (yellow arrow  $\times 50000$ , SEM). Each gradation on the scale indicates 1  $\mu\text{m}$ .



**Fig. 3.** Comparison of macropores on the surface of bone graft materials ( $\times 100$ , SEM). A, Bio-Oss. B, Ti-Oss. Each gradation on the scale indicates 50  $\mu\text{m}$ .

deep inside the pore, resulting in close clot contact. The bone was selectively pulverized in the 1.2- to 1.7-mm range.

**Patients**

Sinus graft procedures were conducted in 10 patients. A lateral approach to the maxillary sinus cavity was used. After elevation of the sinus membrane, between 1.0 and 1.5 g of macropore OCP-coated DBBM was packed into the sinus cavity. The bony window was repositioned, and wound closure was performed with 4-0 nylon. Patients were prescribed antibiotics and analgesics for 5 days, and suture materials were removed 7 days after surgery. Cylindrical bone cores were obtained from each patient with a 3-mm trephine bur at 6 to 8 months after bone graft surgery. Implant fixtures were installed in the prepared drilling hole by a trephine bur followed by sequential drilling as part of the routine implant surgery procedure. Harvested bone cores were sent to the histology laboratory for evaluation (Fig. 1).

This study was conducted in accordance with the ethical principles of the Declaration of Helsinki. The study protocol and consent form were reviewed and approved by the Institutional Review Board of the Asan Medical Center. Informed consent was obtained from all patients.

**Surface Structure of the Bone Graft Material**

The OCP microstructure on the surface of the bone graft material was investigated, and the macropore sizes on

the surface of bone graft materials were compared with those of Bio-Oss (Geistlich Pharma) by scanning electron microscopy (S-4300; Hitachi, Tokyo, Japan).

**Histological Processing and Light Microscopy Imaging**

The bone cores were fixed in 10% formalin for 24 hours, dehydrated in alcohol, rinsed, embedded in paraffin, and sectioned at a thickness of 5.0 μm. The specimens were stained with hematoxylin and eosin. Histomorphometry was investigated using a light microscope. Images were captured by digital cameras and recorded to evaluate the proportions of new bone formation and residual bone graft.

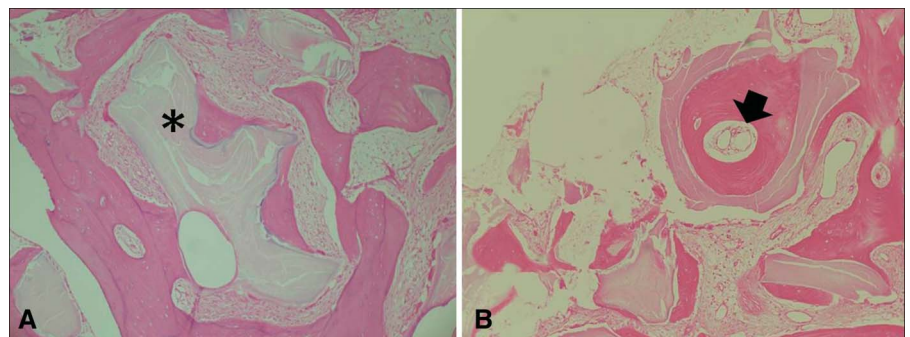
**RESULTS**

**OCP Treatment**

Octacalcium was successfully attached to the surface of the experimental graft. OCPs were evenly distributed on the bone surface (Fig. 2A), and they had scale-like shape embedded among the round bone particles (Fig. 2B).

**Macropore Size Comparison**

The macropore size of Ti-Oss was compared with that of Bio-Oss (Geistlich Pharma). Under ×100 magnification, Ti-Oss had a relatively large pore size (300–400 μm) compared with Bio-Oss (100–200 μm), showing favorable

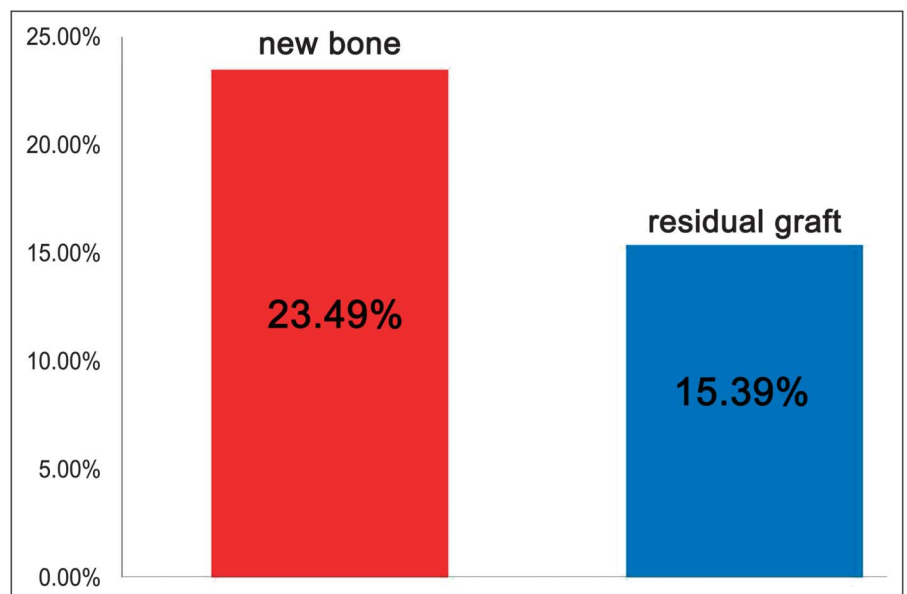


**Fig. 4.** New bone formation of the grafted Ti-Oss in the human maxillary sinus cavity. **A**, Residual graft material (\*) was circumscribed by newly formed bone (hematoxylin and eosin stain, ×40). **B**, Ingrowth of microvessels in the newly formed bone (arrow) with lacunae in the bone lamellae (hematoxylin and eosin stain, ×100).

**Table 1.** New Bone Formation and Residual Graft Materials in the Specimens

Specimen	New Bone (%)	Graft (%)
1	27.64	16.00
2	16.14	5.33
3	11.10	11.86
4	18.40	24.47
5	35.95	17.01
6	31.69	17.64
Mean	23.49	15.39

Specimens 3 and 4 had more residual bone graft material compared with newly formed bone. But, there was more newly formed bone than residual graft material in other specimens. Mean new bone formation was 23.49% (±0.10), and mean residual graft material was 15.39% (±0.06).



**Fig. 5.** Mean new bone formation and residual bone graft in the harvested cylindrical bone core.



conditions for the ingrowth of capillary and osteogenic cells (Fig. 3).

#### Graft Material and New Bone Formation

Four of ten specimens from 10 patients were discarded, as the harvested samples did not have sufficient bone graft material for evaluation. Therefore, 6 specimens were used for histomorphometric analysis. New bone comprised 23.49% ( $\pm 0.10$ ), and residual graft material comprised 15.39% ( $\pm 0.06$ ) (Table 1 and Figs. 4 and 5). Thus, there was more newly formed bone than residual graft material.

#### DISCUSSION

It is vital in implant dentistry to repair the posterior maxillary edentulous area and achieve occlusion for recovery of masticatory function. In the posterior maxillary area, fast alveolar bone resorption occurs after loss of teeth, which in most cases leads to additional surgical procedures, such as bone grafts.<sup>34,35</sup> Two surgical methods, generally, can be used for the reconstruction of alveolar bone in the maxillary posterior edentulous area: the lateral window approach and transalveolar bone technique.<sup>36,37</sup> The lateral window approach is recommended for residual alveolar bone that is less than 6 mm in height. This technique has been widely used for the reconstruction of vertical deficiencies in the maxillary posterior alveolar bone since the success of this procedure was first reported by Tantom.<sup>37</sup> The space acquired in the sinus cavity after elevation of the maxillary sinus mucosa can accommodate various bone graft materials, such as autogenous bone, allograft bone, xenograft bone, synthetic HA, and combinations of bone graft materials.<sup>38-40</sup>

The ideal bone graft materials for the maxillary sinus bone graft should be able to stabilize the space for ingrowth of new bone and osseointegration of implant fixtures and be maintained until consolidation of the bone after prosthodontic treatment. Moreover, the ideal material should show osteoconductivity for the migration of adjacent osteogenic cells. Of course, the ideal bone graft materials should also not cause patient morbidity.<sup>34</sup>

Autogenous bone is superior to other bone graft materials in terms of osteoconductivity, osteoinductivity, and biocompatibility and shows strong stability and resistance to infection after bone graft surgery. Autogenous bone has thus long been considered the gold standard material for implant surgery. An additional surgical procedure, however, is required for harvesting the graft bone, entailing damage to anatomic structures, such as the inferior alveolar nerve and maxillary sinus floor, with attendant clinical complications. Therefore, autogenous bone alternatives are sought after.<sup>31</sup> Synthetic bone shows no limits on supply. Moreover, the size and shape of graft materials can be controlled as needed, and they can be designed to deliver osteogenic molecules such as growth factors and hormones.<sup>41</sup> DBBM has commonly been used as an alternative bone graft material to autogenous bone.<sup>2,5</sup> Bio-Oss (Geistlich Pharma), a representative type of DBBM that is widely used in clinical setting, is a type of HA from natural bovine bone consisting of 10- $\mu\text{m}$  granules with 75%–80% porosity that is processed to a completely deproteinized state.<sup>31</sup> Bio-Oss has excellent osteoconductivity and is slowly absorbed, enabling it to maintain the space beneath the elevated maxillary sinus membrane<sup>42</sup> and act as a scaffold for the ingrowth of osteogenic stem cells.<sup>43</sup> Forum et al<sup>44</sup> reported that Bio-Oss maintained augmented alveolar bone height for more than 3 years, preventing pneumatization.

The studies of Valentini et al,<sup>45</sup> Lee et al,<sup>32</sup> Hallman et al,<sup>46</sup> and Wallace et al<sup>43</sup> have reported on new bone formation and residual bone graft after sinus bone graft using DBBM, finding that the augmented alveolar bone was composed of more residual graft than new bone at the time of implant fixture installation. In contrast, Yildirim et al,<sup>6</sup> Lee et al,<sup>47</sup> Choi et al,<sup>48</sup> de Vicente et al,<sup>1</sup> and Ferreira et al<sup>49</sup> reported more newly formed bone than residual graft in their studies, results that are largely consistent with those of this study showing 23.49% newly formed bone and 15.39% residual material.

Although the compositions of new bone and residual bone might vary according to study design and observation method, the bone cores analyzed in this study showed more new bone than the residual graft, indicating the superior new bone formation ability of the OCP-coated DBBM material.

Osteoconductivity is a key factor for new bone formation in DBBM<sup>32</sup> and angiogenesis should first be considered because osteogenic cells can migrate through microvessels to increase osteoconductivity.<sup>21</sup> The graft material should thus support the extended space and be a scaffold for angiogenesis.<sup>16</sup> In the scaffold design of osteoconductive material, large-sized pores can provide a central marrow space for circumferential bone formation.<sup>31</sup> The macropore-micropore networks of HA act as an architectural frame that induces new bone formation,<sup>18-20</sup> and promote bone formation because microvessels and mesenchymal cells migrate into the required space, ensuring cell adhesion and proliferation.<sup>31</sup>

Macropore sizes are critical for angiogenesis.<sup>22</sup> Herbert et al<sup>50</sup> found that the minimum pore size for bone regeneration was more than 100  $\mu\text{m}$ . Several studies have reported that the optimal macro-level pore size of DBBM for effective bone regeneration was more than 300  $\mu\text{m}$ .<sup>51-54</sup> The pore size affects the direct migration of osteogenic cells and microvessels, and combined micropore and macropore sizes have been found to increase macromolecule absorption, cell adhesion, and bone morphogenetic protein formation, leading to bone healing.<sup>23,55-57</sup> In this study, the macropore-sized DBBM showed relatively large pore sizes (300–400  $\mu\text{m}$ ) compared with Bio-Oss in scanning electron microscopy analysis (Fig. 3), and the composition of new bone was also higher. Dominant angiogenesis was also observed in the macropore (Fig. 4).

Synthetic HA and  $\beta$ -TCP are most widely used graft materials among synthetic bone graft.<sup>58,59</sup> These materials have excellent tissue compatibility and showed direct contact between graft material and new bone without impingement of cell contents.<sup>60,61</sup> OCP is a type of synthetic bone

material that is a precursor of biological apatite, which converts into biological HA under periosteal membrane.<sup>62</sup> The precursor transit to HA through in situ hydrolysis or dissolution of OCP followed by HA precipitation.<sup>24,63</sup> OCP can be applied as a coat to metallic implants, attached to microstructure in the form of granules.<sup>55,64</sup> Kamakura et al<sup>65</sup> compared OCP with other  $\beta$ -TCP and HA and found that OCP was absorbed at a relatively slow rate and has active bone formation ability with a core initiating bone formation in rat calvarial defect model. Fuji et al<sup>18</sup> overcame the fragility of OCP using an alginate scaffold and studied the optimal OCP physical type, reporting various bone formation abilities according to pore size.

## CONCLUSION

In this study, we investigated the potential for new bone formation of the macropore OCP-coated DBBMs, but clinical data were not sufficient for a definite conclusion to be obtained from statistical analysis. Further studies are needed to follow up on this pilot study. However, we found that a macropore-sized design and OCP coating could help microvascular angiogenesis and promote migration of osteogenic cells, thereby presenting a favorable environment for new bone formation in maxillary sinus grafts.

## DISCLOSURE

The authors claim to have no financial interest, either directly or indirectly, in the products or information listed in the article.

## REFERENCES

1. de Vicente JC, Hernández-Vallejo G, Braña-Abascal P, et al. Maxillary sinus augmentation with autologous bone harvested from the lateral maxillary wall combined with bovine-derived hydroxyapatite: Clinical and histologic observations. *Clin Oral Implants Res.* 2010;21:430–438.
2. Froum SJ, Wallace SS, Elian N, et al. Comparison of mineralized cancellous bone allograft (Puros) and anorganic bovine bone matrix (Bio-Oss) for sinus augmentation: Histomorphometry at 26 to 32 weeks after grafting. *Int J Peri-*

*odontics Restorative Dent.* 2006;26:543–551.

3. Klijn RJ, Meijer GJ, Bronkhorst EM, et al. A meta-analysis of histomorphometric results and graft healing time of various biomaterials compared to autologous bone used as sinus floor augmentation material in humans. *Tissue Eng Part B Rev.* 2010;16:493–507.

4. Kolerman R, Tal H, Moses O. Histomorphometric analysis of newly formed bone after maxillary sinus floor augmentation using ground cortical bone allograft and internal collagen membrane. *J Periodontol.* 2008;79:2104–2111.

5. Merckx MA, Maltha JC, Stoeltinga PJ. Assessment of the value of anorganic bone additives in sinus floor augmentation: A review of clinical reports. *Int J Oral Maxillofac Surg.* 2003;32:1–6.

6. Yildirim M, Spiekermann H, Handt S, et al. Maxillary sinus augmentation with the xenograft Bio-Oss and autogenous intraoral bone for qualitative improvement of the implant site: A histologic and histomorphometric clinical study in humans. *Int J Oral Maxillofac Implants.* 2001;16:23–33.

7. Valentini P, Abensur D, Densari D, et al. Histological evaluation of Bio-Oss in a 2-stage sinus floor elevation and implantation procedure. A human case report. *Clin Oral Implants Res.* 1998;9:59–64.

8. Misch CE, Dietsh F. Bone-grafting materials in implant dentistry. *Implant Dent.* 1993;2:158–167.

9. Jensen OT, Shulman LB, Block MS, et al. Report of the Sinus Consensus Conference of 1996. *Int J Oral Maxillofac Implants.* 1998;13(suppl):11–45.

10. Tong DC, Rioux K, Drangsholt M, et al. A review of survival rates for implants placed in grafted maxillary sinuses using meta-analysis. *Int J Oral Maxillofac Implants.* 1998;13:175–182.

11. Maiorana C, Beretta M, Salina S, et al. Reduction of autogenous bone graft resorption by means of bio-oss coverage: A prospective study. *Int J Periodontics Restorative Dent.* 2005;25:19–25.

12. Jensen T, Schou S, Svendsen PA, et al. Volumetric changes of the graft after maxillary sinus floor augmentation with Bio-Oss and autogenous bone in different ratios: A radiographic study in minipigs. *Clin Oral Implants Res.* 2012;23:902–910.

13. Jensen T, Schou S, Stavropoulos A, et al. Maxillary sinus floor augmentation with Bio-Oss or Bio-Oss mixed with autogenous bone as graft in animals: A systematic review. *Int J Oral Maxillofac Surg.* 2012;41:114–120.

14. Damien E, Revell PA. Coralline hydroxyapatite bone graft substitute: A review of experimental studies and bio-

medical applications. *J Appl Biomater Biomech.* 2004;2:65–73.

15. Ashman A, Lopinto J. Placement of implants into ridges grafted with bio-plant HTR synthetic bone: Histological long-term case history reports. *J Oral Implantol.* 2000;26:276–290.

16. Kuboki Y, Takita H, Kobayashi D, et al. BMP-induced osteogenesis on the surface of hydroxyapatite with geometrically feasible and nonfeasible structures: Topology of osteogenesis. *J Biomedical Materials Res.* 1998;39:190–199.

17. Karageorgiou V, Kaplan D. Porosity of 3D biomaterial scaffolds and osteogenesis. *Biomaterials.* 2005;26:5474–5491.

18. Ripamonti U, Van den Heever B, Van Wyk J. Expression of the osteogenic phenotype in porous hydroxyapatite implanted extraskeletally in baboons. *Matrix.* 1993;13:491–502.

19. Ripamonti U, Schnitzler CM, Cleaton-Jones PC. Bone induction in a composite allogeneic bone/alloplastic implant. *J Oral Maxillofac Surg.* 1989;47:963–969.

20. Ripamonti U. Osteoinduction in porous hydroxyapatite implanted in heterotopic sites of different animal models. *Biomaterials.* 1996;17:31–35.

21. Schenk RK, Buser D, Hardwick WR, et al. Healing pattern of bone regeneration in membrane-protected defects: A histologic study in the canine mandible. *Int J Oral Maxillofac Implants.* 1994;9:13–29.

22. Park JW, Kim ES, Jang JH, et al. Healing of rabbit calvarial bone defects using biphasic calcium phosphate ceramics made of submicron-sized grains with a hierarchical pore structure. *Clin Oral Implants Res.* 2010;21:268–276.

23. Rouahi M, Gallet O, Champion E, et al. Influence of hydroxyapatite microstructure on human bone cell response. *J Biomed Mater Res A.* 2006;78:222–235.

24. Brown WE, Eidelman N, Tomazic B. Octacalcium phosphate as a precursor in biomineral formation. *Adv Dent Res.* 1987;1:306–313.

25. Fuji T, Anada T, Honda Y, et al. Octacalcium phosphate-precipitated alginate scaffold for bone regeneration. *Tissue Eng Part A.* 2009;15:3525–3535.

26. Tadjoeidin ES, de Lange GL, Bronckers AL, et al. Deproteinized cancellous bovine bone (Bio-Oss) as bone substitute for sinus floor elevation. A retrospective, histomorphometric study of five cases. *J Clin Periodontol.* 2003;30:261–270.

27. Kurkcu M, Benlidayi ME, Cam B, et al. Anorganic bovine-derived hydroxy-

apatite vs beta-tricalcium phosphate in sinus augmentation: A comparative histomorphometric study. *J Oral Implantol*. 2012;38:519–526.

28. Yang C, Liu Y, Li C, et al. Repair of mandibular defects by bone marrow stromal cells expressing the basic fibroblast growth factor transgene combined with multi-pore mineralized Bio-Oss. *Mol Med Rep*. 2013;7:99–104.

29. Komlev VS, Mastrogiacomo M, Pereira RC, et al. Biodegradation of porous calcium phosphate scaffolds in an ectopic bone formation model studied by X-ray computed microtomograph. *Eur Cell Mater*. 2010;19:136–146.

30. Froum SJ, Wallace SS, Cho SC, et al. Histomorphometric comparison of a biphasic bone ceramic to anorganic bovine bone for sinus augmentation: 6- to 8-month postsurgical assessment of vital bone formation. A pilot study. *Int J Periodontics Restorative Dent*. 2008;28:273–281.

31. Pettinicchio M, Traini T, Murmura G, et al. Histologic and histomorphometric results of three bone graft substitutes after sinus augmentation in humans. *Clin Oral Invest*. 2012;16:45–53.

32. Lee DZ, Chen ST, Darby IB. Maxillary sinus floor elevation and grafting with deproteinized bovine bone mineral: A clinical and histomorphometric study. *Clin Oral Implants Res*. 2012;23:918–924.

33. LeGeros RZ. Preparation of octacalcium phosphate (OCP): A direct fast method. *Calcif Tissue Int*. 1985;37:194–197.

34. Block MS, Kent JN. Maxillary sinus grafting for totally and partially edentulous patients. *J Am Dental Assoc*. 1993;124:139–143.

35. Del Fabbro M, Testori T, Francetti L, et al. Systematic review of survival rates for implants placed in the grafted maxillary sinus. *Int J Periodontics Restorative Dent*. 2004;24:565–577.

36. Summers RB. The osteotome technique: Part 4—future site development. *Compend Contin Educ Dent*. 1995;16:1090. 1092 passim; 1094–1096, 1098, quiz 1099.

37. Tatum H Jr. Maxillary and sinus implant reconstructions. *Dent Clin North Am*. 1986;30:207–229.

38. Piattelli A, Scarano A, Quaranta M. High-precision, cost-effective cutting system for producing thin sections of oral tissues containing dental implants. *Biomaterials*. 1997;18:577–579.

39. Traini T, Degidi M, Sammons R, et al. Histologic and elemental microanalytical study of anorganic bovine bone substitution following sinus floor augmentation in humans. *J Periodontol*. 2008;79:1232–1240.

40. Wetzel AC, Stich H, Caffesse RG. Bone apposition onto oral implants in the sinus area filled with different grafting materials. A histological study in beagle dogs. *Clin Oral Implants Res*. 1995;6:155–163.

41. Wallace SS, Froum SJ, Tarnow DP. Histologic evaluation of a sinus elevation procedure: A clinical report. *Int J Periodontics Restorative Dent*. 1996;16:46–51.

42. Xu H, Shimizu Y, Asai S, et al. Grafting of deproteinized bone particles inhibits bone resorption after maxillary sinus floor elevation. *Clin Oral Implants Res*. 2004;15:126–133.

43. Wallace SS. Lateral window sinus augmentation using bone replacement grafts: A biologically sound surgical technique. *Alpha Omegan*. 2005;98:36–46.

44. Froum SJ, Tarnow DP, Wallace SS, et al. Sinus floor elevation using anorganic bovine bone matrix (OsteoGraf/N) with and without autogenous bone: A clinical, histologic, radiographic, and histomorphometric analysis—part 2 of an ongoing prospective study. *Int J Periodontics Restorative Dent*. 1998;18:528–543.

45. Valentini P, Abensur D, Wenz B, et al. Sinus grafting with porous bone mineral (Bio-Oss) for implant placement: A 5-year study on 15 patients. *Int J Periodontics Restorative Dent*. 2000;20:245–253.

46. Hallman M, Lundgren S, Sennerby L. Histologic analysis of clinical biopsies taken 6 months and 3 years after maxillary sinus floor augmentation with 80% bovine hydroxyapatite and 20% autogenous bone mixed with fibrin glue. *Clin Implant Dent Relat Res*. 2001;3:87–96.

47. Lee YM, Shin SY, Kim JY, et al. Bone reaction to bovine hydroxyapatite for maxillary sinus floor augmentation: Histologic results in humans. *Int J Periodontics Restorative Dent*. 2006;26:471–481.

48. Choi KS, Kan JY, Boyne PJ, et al. The effects of resorbable membrane on human maxillary sinus graft: A pilot study. *Int J Oral Maxillofac Implants*. 2009;24:73–80.

49. Ferreira CE, Novaes AB, Haraszthy VI, et al. A clinical study of 406 sinus augmentations with 100% anorganic bovine bone. *J Periodontol*. 2009;80:1920–1927.

50. Hulbert SF, Young FA, Mathews RS, et al. Potential of ceramic materials as permanently implantable skeletal prostheses. *J Biomed Mater Res*. 1970;4:433–456.

51. Gauthier O, Bouler JM, Aguado E, et al. Macroporous biphasic calcium phosphate ceramics: Influence of macropore diameter and macroporosity percentage on bone ingrowth. *Biomaterials*. 1998;19:133–139.

52. Götz HE, Müller M, Emmel A, et al. Effect of surface finish on the osseointegration of laser-treated titanium alloy implants. *Biomaterials*. 2004;25:4057–4064.

53. Kuboki Y, Jin Q, Kikuchi M, et al. Geometry of artificial ECM: Sizes of pores controlling phenotype expression in BMP-induced osteogenesis and chondrogenesis. *Connect Tissue Res*. 2002;43:529–534.

54. Tsuruga E, Takita H, Itoh H, et al. Pore size of porous hydroxyapatite as the cell-substratum controls BMP-induced osteogenesis. *J Biochem*. 1997;121:317–324.

55. Barrère F, van der Valk CM, Dalmeijer RA, et al. Osteogenicity of octacalcium phosphate coatings applied on porous metal implants. *J Biomed Mater Res A*. 2003;66:779–788.

56. Lecomte A, Gautier H, Bouler JM, et al. Biphasic calcium phosphate: A comparative study of interconnected porosity in two ceramics. *J Biomed Mater Res B*. 2008;84:1–6.

57. Yuan H, Zou P, Yang Z, et al. Bone morphogenetic protein and ceramic-induced osteogenesis. *J Mater Sci Mater Med*. 1998;9:717–721.

58. Nunes CR, Simske SJ, Sachdeva R, et al. Long-term ingrowth and apposition of porous hydroxyapatite implants. *J Biomed Mater Res*. 1997;36:560–563.

59. Vanassche BJ, Stoelinga PJ, de Koomen HA, et al. Reconstruction of the severely resorbed mandible with interposed bone grafts and hydroxyapatite. A 2-3 year follow-up. *Int J Oral Maxillofac Surg*. 1988;17:157–160.

60. Rawlings CE III. Modern bone substitutes with emphasis on calcium phosphate ceramics and osteoinductors. *Neurosurgery*. 1993;33:935–938.

61. Spector M. Anorganic bovine bone and ceramic analogs of bone mineral as implants to facilitate bone regeneration. *Clin Plast Surg*. 1994;21:437–444.

62. Suzuki O, Nakamura M, Miyasaka Y, et al. Bone formation on synthetic precursors of hydroxyapatite. *Tohoku J Exp Med*. 1991;164:37–50.

63. Bigi A, Boanini E, Falini G, et al. Effect of sodium polyacrylate on the hydrolysis of octacalcium phosphate. *J Inorg Biochem*. 2000;78:227–233.

64. Barrere F, Layrolle P, van Blitterswijk CA, et al. Biomimetic calcium phosphate coatings on Ti6Al4V: A crystal growth study of octacalcium phosphate and inhibition by Mg<sup>2+</sup> and HCO<sub>3</sub><sup>-</sup>. *Bone*. 1999;25(2 suppl):107S–111S.

65. Kamakura S, Sasano Y, Homma H, et al. Implantation of octacalcium phosphate nucleates isolated bone formation in rat skull defects. *Oral Dis*. 2001;7:259–265.