

# IMPLANT Remover Kit

by MEGA'GEN

## Feature

- With various components, the user can select from 3 different surgical methods.
- The special trephine bur equipped with a guide enables the safe and quick implant removal without bone loss.
- Kit includes special forceps for simple implant removal.



- ✓ Accurate engagement allows easy removal of failed implants.
- ✓ Accurate drilling and less chair time.
- ✓ Minimal bone loss.
- ✓ Eliminates risk of fracture.

## Direction for use

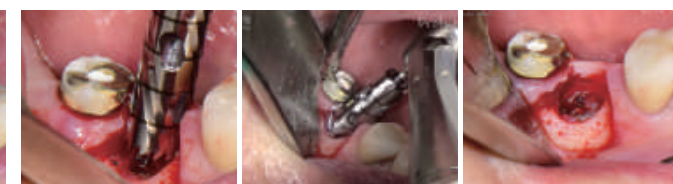
· case 1



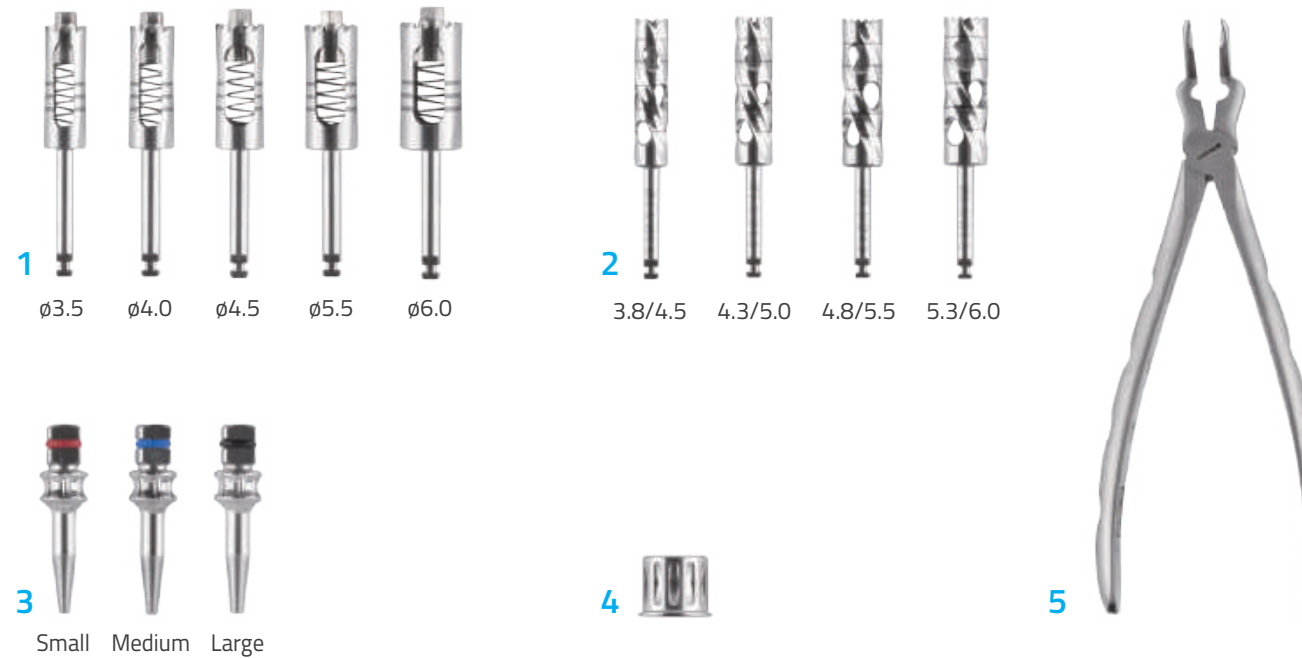
· case 2



· case 3



## Component



### 1. EASY REMOVER

Ø3.5, Ø4.0, Ø4.5, Ø5.0, Ø6.0

Guide tap is engaged to the fixture for implant removal.

### 2. Trephine

Ø3.8/4.5, Ø4.3/5.0, Ø4.8/5.5, Ø5.3/6.0

Connected to engine handpiece for removal surgery.

### 3. Implant Remover

Used for manual removal by turning counterclockwise. [Small, Medium, Large]

### 4. Hand/Straumann Adapter

Used for converting the ratchet driver for hand usage, or connecting with Straumann Ratchet Wrench.

### 5. Implant Forceps

Used for first step of implant removal.

# MegaGen Easy Series

EASY Implant Guide Kit  
by MEGA'GEN

EASY Bone Scraper  
by MEGA'GEN

IMPLANT Remover Kit  
by MEGA'GEN

Never be complacent about the current steps!  
Take the challenge!



Efficient! Accurate! Simple! Your smile is precious!



Head Office & Factory  
Gangnam Office

45, Secheon-ro 7-gil, Dasa-eup, Dalseong-gun, Daegu, Korea  
MegaGen Tower, 607 Seolleung-ro, Gangnam-gu, Seoul, Korea

www.imegagen.com

T. +82-1544-2285  
T. +82-1566-2338



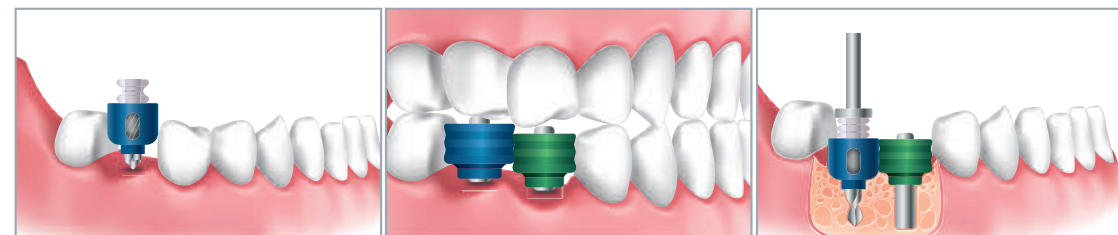
## Feature

- With a single drilling during fixture placement, it is possible to guide the placement depth and the crown size simultaneously.
- It prevents from making inadequate (too wide or narrow) space between implants during multiple placements.
- Reduce chair time, and prevent frequent surgery mistakes in advance!



- ✓ Excellent prevention of cross-infection!
- ✓ 50% increase in usability, compared to previous version!
- ✓ Reasonable and Cost-efficient kit, consisting of just the essential items!
- ✓ Simple configuration enables more convenient and intuitive use!

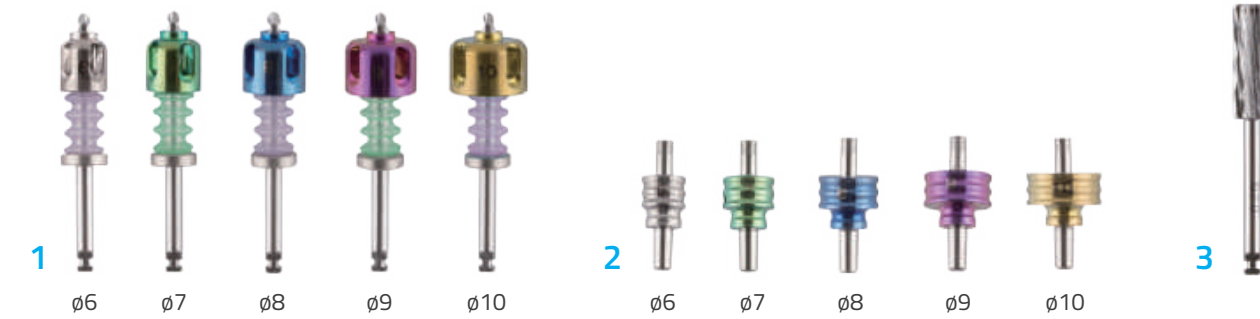
## Direction for use



· case 1



## Component



### 1. Crown Guide Drill

Ø2.7, Ø6, Ø7, Ø9, Ø10

Guides the center, direction and spacing at the same time according to the size of crown.

### 2. Crown Guide Pin (occlusal function applied)

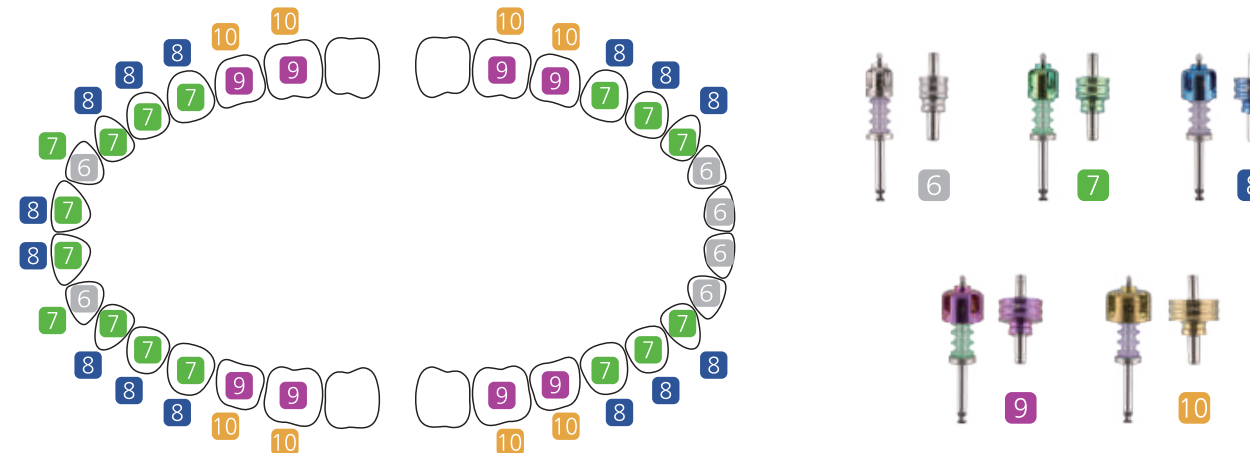
Ø6, Ø7, Ø8, Ø9, Ø10

The direction and occlusal check of the crown is possible.

Also enables prediction of the size and direction of adjacent crowns when placing multiple implants.

### 3. Crest Trimmer

Used to flatten narrow or thin bone.



### 1 Blade

High durability of blade obtained from heat-treated material

### 2 Chamber

Transparent material allows easier positioning in the mouth, and real-time checking of harvested bone.

### 3 Body

The body is ergonomically designed with the optimum angles for better performance.

- Front part is bent for easier lateral access to the oral cavity.
- Blade can be used total 4 times, by rotating 90° after each use.
- Ergonomic design for comfortable handling.
- Transparent body allows to visually check the amount of harvested autogenous bone in real time.

1 Box (See in a case)